

2011

Your research data as a valuable asset: taking the long term view

Julia Gross
Edith Cowan University

Your research data as a valuable asset

taking the long term view

Julia Gross
Research Data Librarian

- New data paradigm
- Value of research data
- Research data management
- Australian National Data Service (ANDS)

Why is research data important?

‘our capacity to measure, store, analyse, and visualise data is becoming the new reality to which research will have to adapt’

(Willbanks, Science Commons)

EResearch

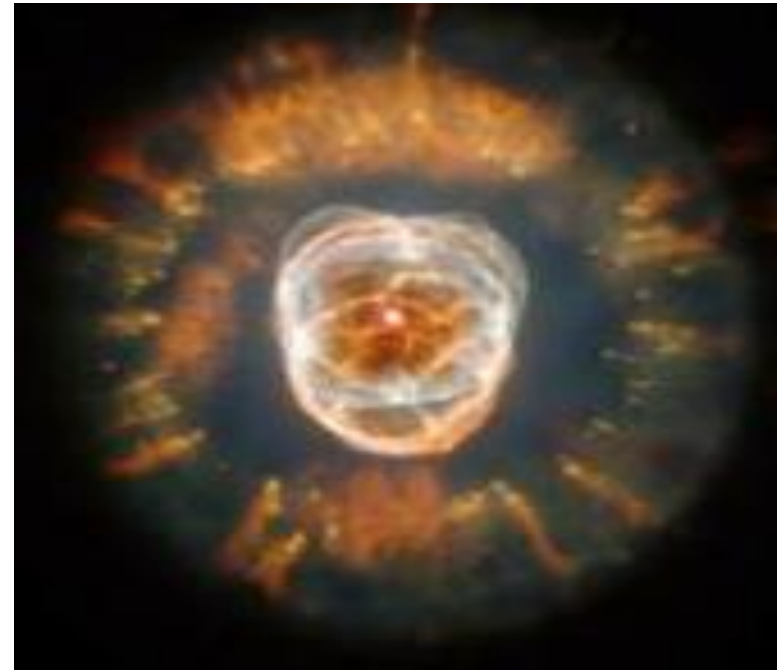
Collaboration

Open access to data

Data repositories



- Data is no longer just a **by product** of research
- May be the **starting point** of research
- Data is an asset
- A deluge of data
- Why now?



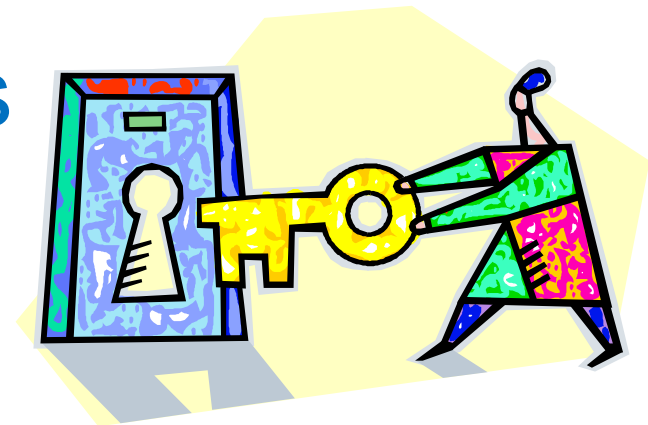
- Data as an asset
- Assets can be shared
- Lead to collaboration opportunities
- Lead to further research
- Benefits to researcher

.....Examples of data sharing.....

CSIRO Bringing pulsars to the people



- **Open access to publicly funded research**
- Research funding bodies may require this
- Open access
 - Institutional repositories
 - Data repositories



- **Australian Code for the Responsible Conduct of Research**
 - S1 General principles of responsible research
 - S2 Management of research data and primary materials



- Responsible conduct of research
 - proper management of research data
 - retention of research data
- Retaining research data important
 - may be all that remains at the end of the research project

What does this mean for researchers?

Data management planning



- ***Records needed to validate research findings***
- Data collected or created during research
- Not format-specific
- Differs across disciplines

- Why do you need to plan?
- With most data now being **born digital** the need to manage research data is paramount
- And when should you do this?



- What to include in a plan?
 - Data to be generated or collected
 - Ownership of the data
 - Legal and ethical requirements that apply to the use of the data
 - Storage and back-up of the data
 - Volume of data and file formats
 - Retention and disposal of the data when the research project is complete

- Discovery interface
 - “Window on the Commons”
- Data collections of Australian researchers
- Makes research data collections visible
- You can see what has been done already



<http://ands.org.au/index.html>

ANDS is supported by the Australian Government through the National Collaborative Research Infrastructure Strategy Program and the Education Investment Fund (EIF) Super Science Initiative



Australian Government

**Department of Innovation
Industry, Science and Research**



Find research data:

Google™ Custom Search

Search

About ANDS

Projects & Funding

Our Approach

Events

For Researchers

Manage Data

Publish Data

Find Data

For Partner Institutions

Make Connections

Managing Data

Guides

Publishing Data

Licensing

Online Services

Content Providers Guide

Technical resources

Australian National Data Service

More Australian researchers reusing research data more often.

ANDS is building the **Australian Research Data Commons**: a cohesive collection of research resources from all research institutions, to make better use of Australia's research outputs.

ANDS enables the transformation of:

Data that are: **to Structured Collections that are:**

Unmanaged → Managed

Disconnected → Connected

Invisible → Findable

Single-use → Reusable

...so that Australian researchers can easily publish, discover, access and use research data.

Find data on [Research Data Australia](#)

News

Migrating ARCS identity provider (IdP) sharedToken to your home institution's IdP

Users whose institution has recently been added as an AAF member should port or migrate their existing sharedToken to their institution's IdP. [More information.](#)

AusGOAL site official launch

Earlier this week [AusGOAL](#) website went live online. ANDS is working with AusGOAL to enable an aspiration of the [Australian Research Data Commons](#): that more data is re-usable.

[More information](#)

ANDS in The Australian - Australian mirror of EMBL's EBI database launched last month

Launch of the European Molecular Biology Laboratory (EMBL)'s European Bioinformatics Institute (EBI) database in Australia, the first ever mirror of this

A Window on the Australian Research Data Commons

Research Data Australia is a discovery service for Australian research data.

Registry Contents

- [Collections \(24769\)](#)
Useful grouping of physical or digital items.
- [Parties \(2321\)](#)
Person or organisation that has some relationship to a collection, service, activity, or party.
- [Services \(33\)](#)
A mechanism for gaining access to information.
- [Activities \(885\)](#)
Undertaking or process related to the creation, update, or maintenance of a collection.

Collection Providers

- [AuScope \(69\)](#)
- [AusStage: Gateway to the Australian Performing Arts \(1\)](#)
- [AustLII \(458\)](#)
- [Australian Institute of Marine Science \(371\)](#)
- [Australian Nuclear Science and Technology Organisation \(100\)](#)
- [Australian Ocean Data Network \(8517\)](#)
- [Breast Cancer Tissue Bank \(18\)](#)

NCRIS Partner Spotlight



Search Research Data Australia

Results 1 to 6 of 31

[Sinclair · Russell · Dr](#)

[What Are the Risks of Viral Infections in Drinking Water Storages?](#)

Project Type: Grant Initial Year: 2005 Duration: 5 years Project Status: Completed Funding Sponsor: ARC Linkage - Projects (and/or...

[Environmental fingerprints of biogeochemical cycles embeded in tree rings: Linking global climate change to local long-term forest productivity](#)

Project Type: Grant Initial Year: 2010 Duration: 3 years Project Status: Proceeding Funding Sponsor: ARC Discovery Projects (including...

[Resilience of Moreton Bay to climate change: Links between nutrient inputs and plankton dynamics](#)

Project Type: Grant Initial Year: 2008 Duration: 3 years Project Status: Proceeding Funding Sponsor: ARC Linkage - Projects (and/or...

[Sources of phosphorus promoting cyanobacteria in subtropical reservoirs](#)

Project Type: Grant Initial Year: 2007 Duration: 3 years Project Status: Proceeding Funding Sponsor: ARC Linkage - Projects (and/or...



Research Data Australia

[Home](#) | [About](#) | [Disclaimer](#) | [Help](#) | [Contact Us](#) | [ANDS Online Services](#)

[Show Advanced Search](#)

Path: [Home](#) > [Edith Cowan University](#) > [Collections](#) >

Collection:

Spectral reflectance data of plant green

Type:

Dataset

Full description:

The dataset contains spectral reflectance data of various crop plants and weeds. The data has been collected in the field using a spectrometer, from farm locations in Queensland and Western Australia. The dataset contains the spectral reflectance characteristics of various crop plants and weeds including sugarcane, cotton, wheat, skeleton weeds, guinea and Johnson grasses, which were monitored at different plant development stages in Gingin, Western Australia and Toowoomba and Bundaberg, Queensland. The data is categorised by time of year collected, plant name, weed name, farm and place. At this stage the dataset contains spectral reflectance data of more than 10 different plants, collected since 2008, however the dataset is growing. Data is stored in Excel file format.

Access rights:

Access to the dataset is subject to legal and commercial restrictions. Photonic Detection Systems is the commercial partner. Contact Professor Kamal Alameh of the Electron Science Research Institute at Edith Cowan University to determine access conditions.

Note:

Other participants in the research are Sreten Askraba (Senior Research Fellow, ESRI) and Arie Paap (Post Doctoral Research Fellow, ESRI).

Search Research Data Australia

Results 7 to 12 of 28

[Analysis of the tumour vasculature in a mouse-human carcinoma xenograft](#)

The owner / manager of this data collection may provide access to this data collection by negotiation. You could be required to indicate your intended use of the data, to meet any costs...

[Barriers to HIV testing among people from culturally and linguistically diverse backgrounds](#)

Funded by NSW Health. Community Partners: Parramatta Sexual Health Clinic; Bigge Park Centre (Liverpool Sexual Health); Livingstone Road Sexual Health Clinic; Royal Prince Alfred...

[Victoria Cancer Council Colorectal Cancer Survey](#)

The collection is a result of data collected from colorectal cancer patients and their first degree relatives (FDRs) as part of a project testing the influence of intervention strategies...

[Preclinical and clinical evaluation of an antibody therapeutic targeting prostate carcinoma](#)

- Your supervisor
- Email Library research data staff:
researchonline@ecu.edu.au
- Handout: Section 2 of the Australian Code for the Responsible Conduct of Research
- ECU Research Data and Records Management Policy: http://www.ecu.edu.au/GPPS/policies_db/policies_view.php?rec_id=0000000327
- Seeding the Commons ECU project:
<http://www.research.ecu.edu.au/ori/commons/index.php>

- Your research data is valuable
- Your research data needs to be managed
- Be aware of The Code and researcher responsibilities
- ECU developing data management plan templates
- National developments:
 - Australian National Data Service (ANDS)

Thanks!

