

2012

## **Retrospective Time Perception of a Long Task: Using Music to Distinguish between Attention-based and Memory-based Models**

James Brooks  
*Edith Cowan University*

Follow this and additional works at: [https://ro.ecu.edu.au/spsyc\\_pres](https://ro.ecu.edu.au/spsyc_pres)



Part of the [Psychology Commons](#)

---

Supervisors: Professor Craig Speelman  
This Presentation is posted at Research Online.  
[https://ro.ecu.edu.au/spsyc\\_pres/12](https://ro.ecu.edu.au/spsyc_pres/12)

# Retrospective Time Perception of a Long Task: Using Music to Distinguish Between Attention-based and Memory-based Models

**James Brooks**

**School of Psychology and Social Science**

**Supervisor: Prof. Craig Spielman**

# Attention-based Models

- Attention-based models propose that there are limited attentional resources.
- When two concurrent tasks are performed, attention is divided and performance on each task decreases.
- Attentional resources are split between temporal and non-temporal processing.
- When more attentional resources are provided to non-temporal processing, fewer attentional resources are provided to temporal processing.
- As fewer attentional resources are provided to temporal processing, less temporal information is encoded and the time period is perceived as shorter.
- Alternatively, when attentional resources are directed towards temporal processing, more temporal information is encoded, and the duration is perceived as longer.

# Memory-based Models

- Perceived time duration is a reconstruction of events and contextual changes that are experienced and remembered, during an elapsed time period.
- During a time period, events are encoded into memory along with contextual changes associated with each event.
- When the judgement of the duration is to be made, the availability of events tagged with the relevant context are assessed and retrieved.
- When more events and contextual changes are available and retrieved, the duration of the event is perceived as longer.
- Alternatively, when fewer events and contextual changes are available and/or retrieved, the duration is perceived as shorter.

# Previous Research

- Attention-based models are supported by studies using a prospective paradigm and short durations (0.1s to a few seconds).
- Memory-based models are supported by studies using a retrospective paradigm and longer durations (more than 60s is considered long).
- However, attention-based models become relevant to explaining retrospective time perception when the task is long and monotonous.

# Method

- Duration: 1390s (23min 10sec)
- Music: 62 simple one-line melodies
- Sustained Attention to Response Task (SART): Press a button when a number appears, except if the number is 4

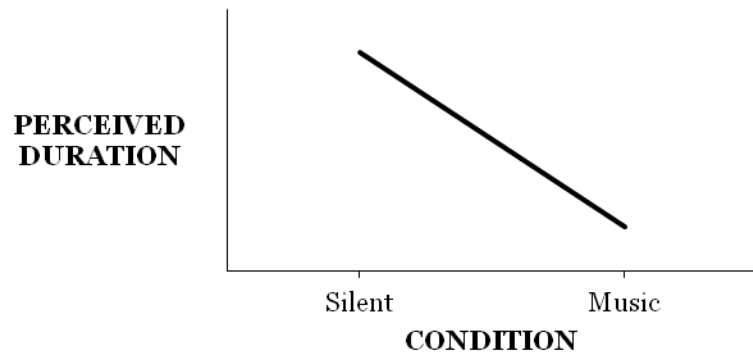
## **Conditions:**

- Silent: SART only
- 1: 100% familiar songs on piano
- 2: 100% familiar songs on different instruments
- 3: 50% familiar songs on different instruments

# Hypothesis 1

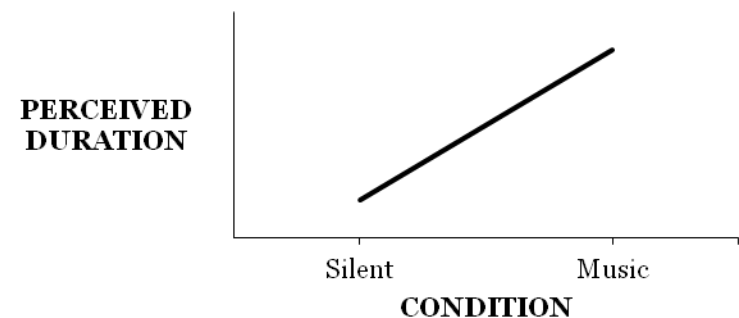
## Attention-based:

- The time duration of the music conditions will be perceived as **SHORTER** than that of the silent condition.



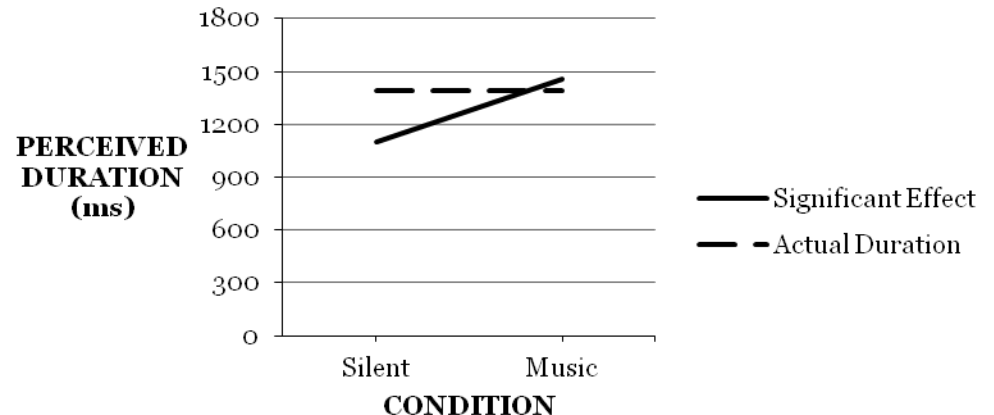
## Memory-based:

- The time duration of the music conditions will be perceived as **LONGER** than that of the silent condition.



## Result:

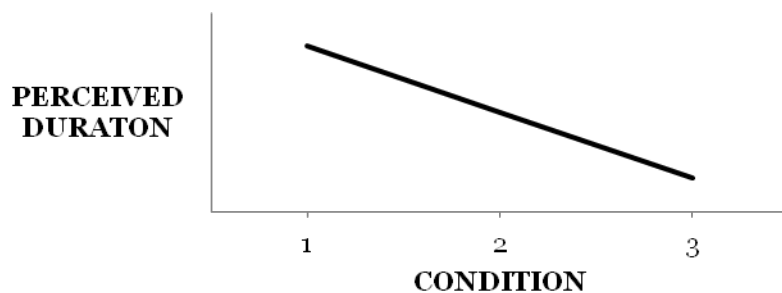
The time duration of the music conditions was perceived as **LONGER** than that of the silent condition.



## Hypothesis 2

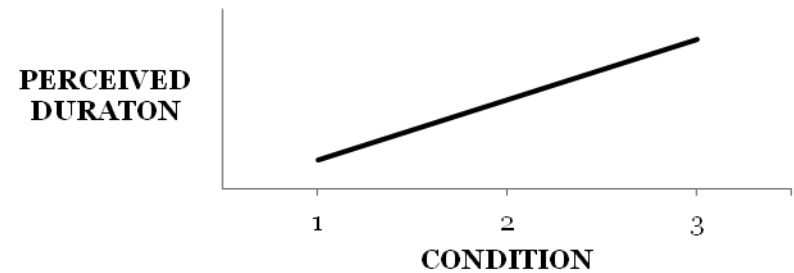
### Attention-based:

- Condition 1 will be perceived as LONGER than Condition 2 & 3 and Condition 2 will be perceived as LONGER than Condition 3



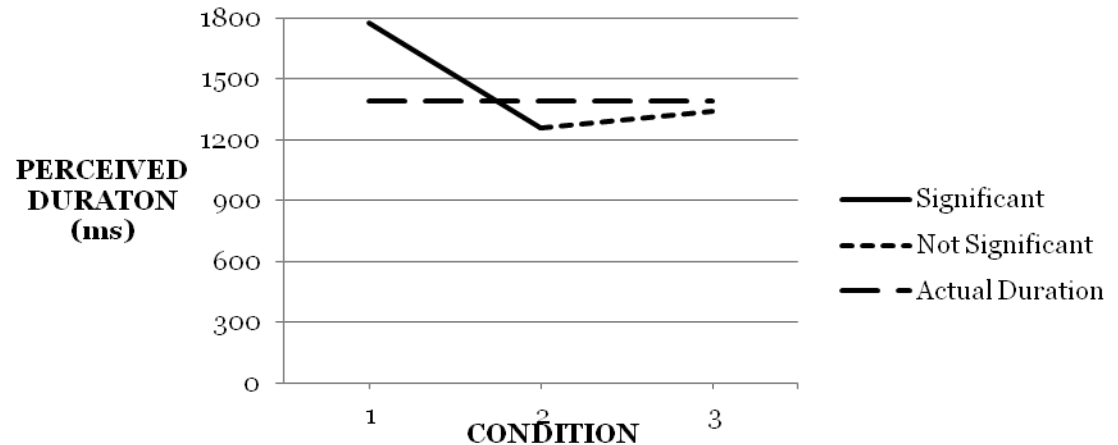
### Memory-based:

- Condition 1 will be perceived as SHORTER than Condition 2 & 3, and Condition 2 will be perceived as SHORTER than Condition 3



## Result:

Condition 1 was perceived as LONGER than Condition 2. There were no other significant differences

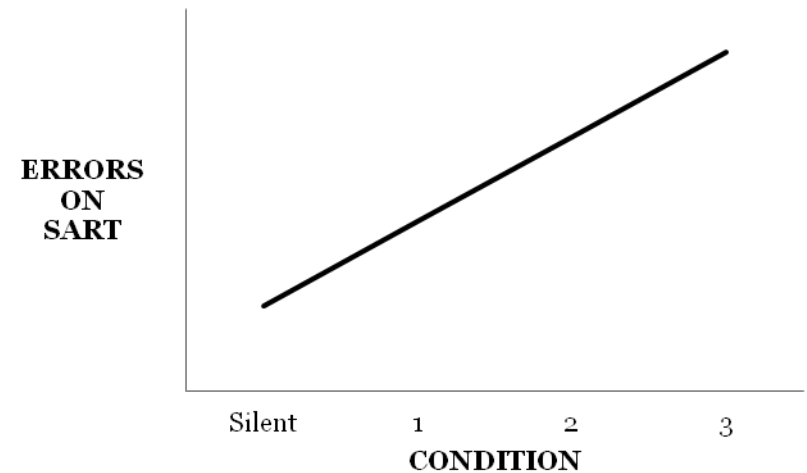




# Hypothesis 3

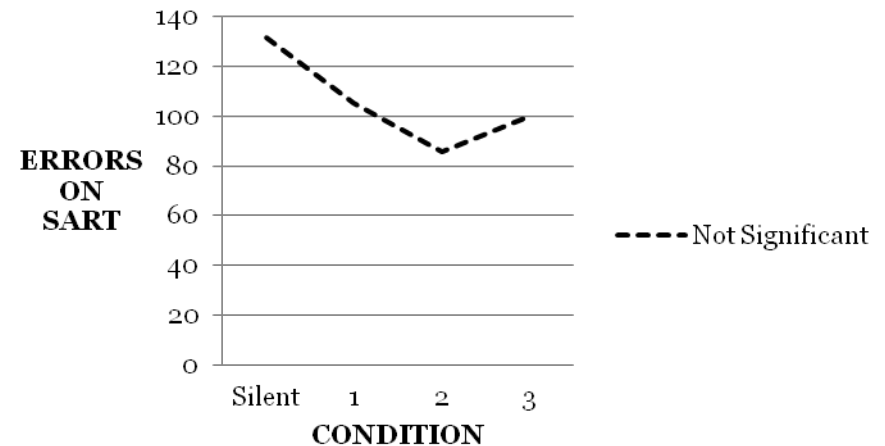
Attention-based:

- The number of errors on the SART will be the smallest in the silent condition, followed by 1, 2, & 3.



# Result:

There was no significant difference in the number of errors on the SART between the conditions.

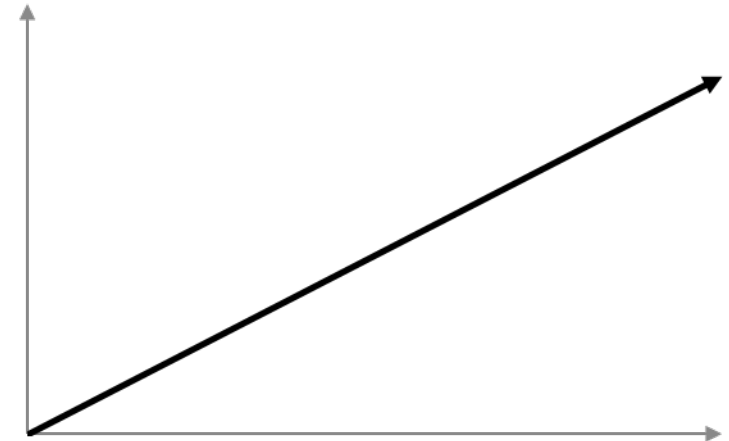


## Hypothesis 4

Memory-based:

- The number of songs remembered will be positively correlated to perceived time duration.

PERCEIVED  
DURATION

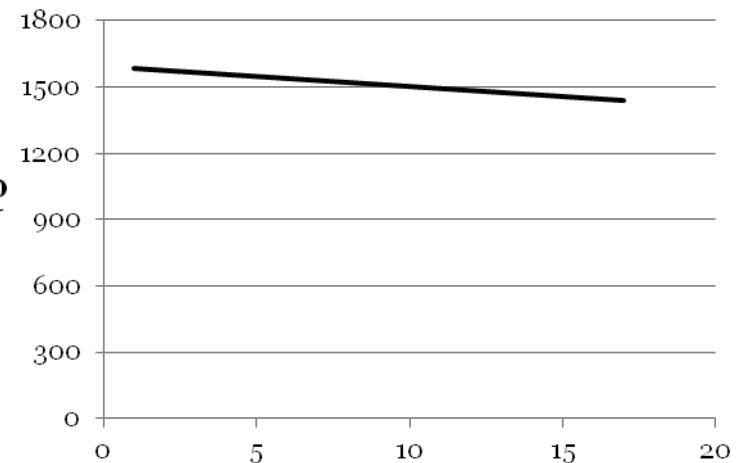


NUMBER OF SONGS REMEMBERED

Result:

There was no significant correlation between the number of songs remembered and perceived time duration.

PERCEIVED  
DURATION  
(ms)



NUMBER OF SONGS REMEMBERED

# Discussion

- Overall, support was provided for memory-based models.
- However, there was no correlation between number of songs remembered and perceived duration.
- The average number of songs remembered was 6.83 ( $SD = 3.81$ ), which suggests memory-based models are limited by short-term memory capacity.
- Perceived duration may therefore be based on implicit memory.
- Within the music conditions, some support is provided for attention-based models.
- However, there was no difference between the number of errors on the SART.
- Interestingly, perceived durations of Condition 2 & 3 were the most accurate.
- Perceived duration was limited by a ceiling effect.

# Key References

- Bailey, N., & Areni, C. S. (2006). When a few minutes sound like a lifetime: Does atmospheric music expand or contract perceived time? *Journal of Retailing*, 82, 189-202.
- Block, R. A., & Reed, M. A. (1978). Remembered duration: Evidence for a contextual change hypothesis. *Journal of Experimental Psychology*, 4, 656-665.
- Grondin, S. (2010). Time and time perception: A review of recent behavioural and neuroscience findings and theoretical directions. *Attention, Perception, & Psychophysics*, 72, 561-582.
- Ornstein, R. E. (1969). *On the experience of time*. England: Penguin Books.
- Zakay, D., & Block, R. A. (1995). An attentional-gate model of prospective time estimation. In M. Richelle, V. De Keyser, G. d'Ydewalle, & A. Vandierendonck (Eds.), *Time and the dynamic control of behavior* (pp. 167-178). Belgium: Universite de Liege.