

1-1-2011

Load Demand Forecasting: Model Inputs Selection

Thair Mahmoud
Edith Cowan University

Daryoush Habibi
Edith Cowan University

Octavian Bass
Edith Cowan University

Stefan W. Lachowicz
Edith Cowan University

Follow this and additional works at: <https://ro.ecu.edu.au/ecuworks2011>



Part of the [Power and Energy Commons](#)

[10.1109/ISGT-Asia.2011.6167098](https://ro.ecu.edu.au/ecuworks2011/822)

This is an Author's Accepted Manuscript of: Mahmoud, T.S. , Habibi, D. , Bass, O. , & Lachowicz, S. (2011). Load demand forecasting: model inputs selection. *Paper presented at the 2011 IEEE Innovative Smart Grid Technologies Asia. Perth, Australia.* Available [here](#)

© 2011 IEEE. Personal use of this material is permitted. Permission from IEEE must be obtained for all other uses, in any current or future media, including reprinting/republishing this material for advertising or promotional purposes, creating new collective works, for resale or redistribution to servers or lists, or reuse of any copyrighted component of this work in other works.

This Conference Proceeding is posted at Research Online.

<https://ro.ecu.edu.au/ecuworks2011/822>

Load Demand Forecasting: Model Inputs Selection

T. S. Mahmoud *Member, IEEE*, D. Habibi, *Senior Member, IEEE*, O. Bass, *Senior Member, IEEE*, and S. Lachowicz, *Senior Member, IEEE*,

Abstract—Developing a good demand forecasting model is the art of identifying the best modelling parameters. Improving the forecasting performance needs to study the input/output parameters of the system to identify the effective forecasting variables. In this paper, the energy demand of Joondalup Campus of Edith Cowan University (ECU) in Western Australia has been selected as a case study for the design and verification of a suitable forecasting model. Fuzzy Subtractive Clustering Method (FSCM) based Adaptive Neuro Fuzzy Inference System (ANFIS) is used as a proposed modelling network in this paper. Basically, three-input forecasting models have been developed based on 12-month models to perform ECU energy demand forecasting. The input/output parameters selection was made after analysing the historical demand pattern in ECU energy system. Generally, increasing the number inputs in model network may have wider training scope and better forecasting accuracy. However, the wrong choice of the additional input would deteriorate the forecasting accuracy. From analysing the historical operation of ECU energy system, four and five-input variables could be identified and modelling has been performed. The result show that four-input models were the best in the prediction performance among 12-month models of the annual demand prediction of ECU.

I. INTRODUCTION

ENERGY Management System (EMS) is key to achieving secure, reliable, efficient and low cost energy supply. The main objective of EMS is to make optimized use of the energy to achieve a cleaner and economic energy supply. By anticipating future energy demand, a suitable mix of energy sources may be identified, including renewable sources, with substantial economic and environmental benefits.

Among many roles of EMS, demand forecasting is considered as a key function for achieving green and economic generation. The use of soft computing and artificial intelligence can aid in developing demand prediction models. A number of artificial intelligence methods have been applied to achieve accurate forecasting models. ANFIS based on the data field was proposed by [1] to develop a demand forecasting model. This method was proposed to solve the drawbacks of the general fuzzy neural network, and to optimize fuzzy rules. This method has shown superiority in performance to that of the artificial neural network in terms of time of learning and accuracy of forecasting. A model of short term forecasting based on previous day features has been developed using adaptive neural fuzzy system. Many variables have been considered in the modelling procedure e.g. temperature maximum and minimum, climate change and the previous days consumed load [2]. Short term forecasting model has been

developed using neuro fuzzy system *Locally Liner Model Tree (LoLiMoT) learning algorithm* [3]. The model performance has been compared with a multilayer preceptron and *Kohonen Classification and Intervention Analysis*. Next day demand forecasting in electrical power generation has been developed using ANFIS [4]. The purpose was to improve the power system as an application of artificial neural networks and fuzzy logic based hourly load demand forecasting with linear polynomial and exponential equation. Multivariate inputs for electrical load forecasting on hybrid neuro-fuzzy and fuzzy C-Means forecaster has been proposed by [5]. The neuro-fuzzy approach was used with additional fuzzy C-Means clustering method before the input enters the network. An intelligent method for medium and long-term energy demand forecasting of a complicated electrical systems has been provided. The demand forecasting using time series modelling and ANFIS estimator has been developed [6]. A clustering based genetic fuzzy expert system for electrical energy demand forecasting has been presented. A novel load forecasting approach has been developed by integration of genetic fuzzy systems and data clustering for extracting a load forecaster expert system [7]. A new approach to short-term load forecasting in a deregulated and price-sensitive environment has been presented. A real-time pricing type scenario is envisioned where energy prices could change on an hourly basis with the consumer having the ability to react to the price signal through shifting electricity usage from expensive periods to cheaper periods when possible[8]. ANFIS modelling has been proven as a reliable forecasting method as compared to other forecasting methods. The number and type of the input variables is playing a big role in increasing or decreasing the forecasting accuracy. As a case study for this investigation, energy demand and load curve data from the Joondalup Campus of ECU is used.

II. LOAD CURVE IN EDITH COWAN UNIVERSITY

The load curve for the selected power system has several pattern changes which are dependent on several variables. From the load curve changes, it has been identified that the major factors that affect the load changes are weather, date, time, order of the day (Monday, Tuesday,...,etc.) and type of the day (working day or weekends and holidays). In this study, infrequent university events which results in abnormal load demands are neglected, as it is assumed that these abnormal load changes will have warning notifications or predefined settings to avoid system overloads. Figure 1 shows January 2008 energy demand for ECU.

The load curve is used to estimate the range and pattern of data for forecasting. The other accessible important factor,

T. S. Mahmoud, D. Habibi, O. Bass and S. Lachowicz are with Edith Cowan University, Joondalup, WA 6027, AUSTRALIA (e-mail:t.mahmoud@ecu.edu.au) Telephone: +61 (8) 6304-5318, Fax: +61 (8) 6304-5811).

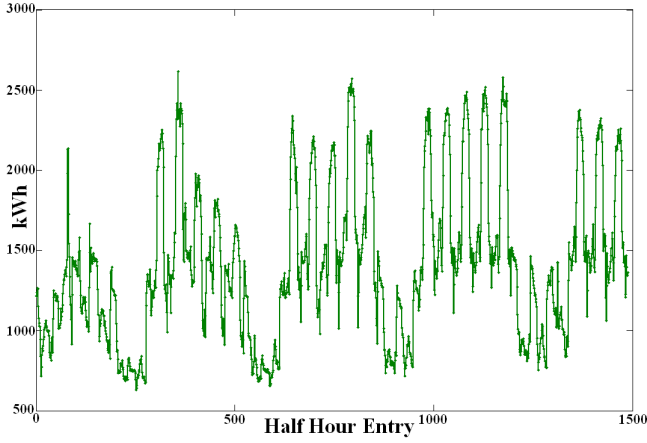


Figure 1. January 2008 demand curve for Joondalup Campus of ECU

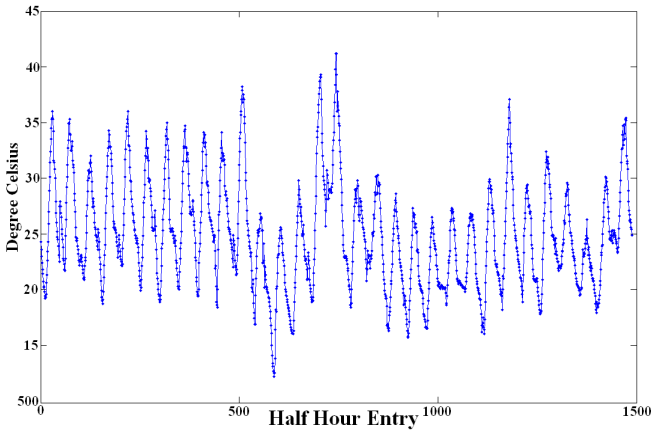


Figure 2. January 2008 Temperature data for the City of Joondalup

which can greatly influence the forecasting, is temperature changes. Figure 2 shows the daily temperature change in the city of Joondalup in January 2008.

To identify suitable parameters that can improve forecasting accuracy, previous years' demand has been analysed. It has been found, as shown in Figure 3, that the type of the day (working day or weekends and holidays) has a large bearing on the demand pattern. It may be observed that for the same variable values, different demand can be obtained as shown in Figure 3. It is therefore necessary to look for another variable that accounts for the differences in demand. It is known that there are many unmeasured factors that may affect the demand, e.g. the number of students on campus, number of occupied rooms, nature of students and staff activities, etc.. However, there are still some simpler factors that may substantially influence the demand, e.g. the order of the day in the week. It is hypothesised that the type of the day will have more influence than the order. This is simply because in holidays or weekends the demand drops to nearly half, whereas there is no substantial difference between the working days of the week.

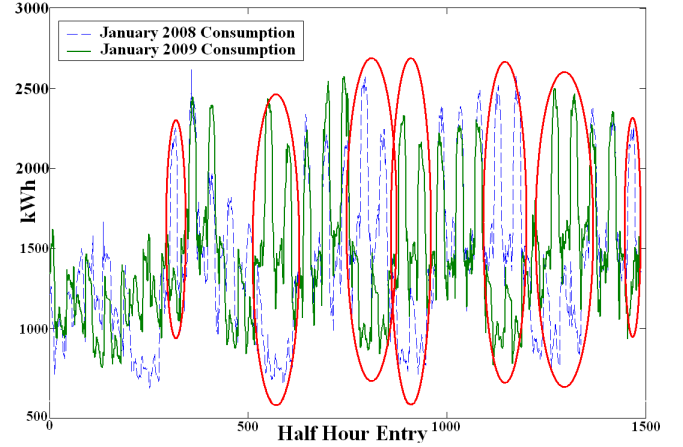


Figure 3. Different load patterns for Joondalup campus of ECU in 2008 and 2009

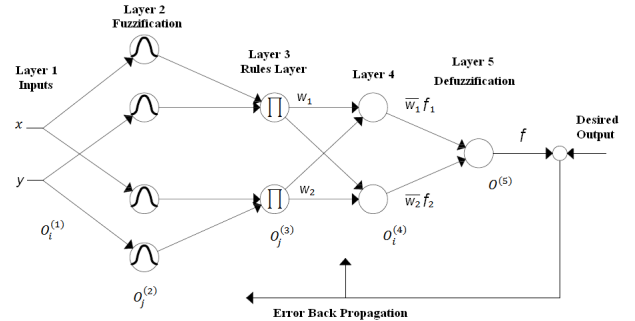


Figure 4. ANFIS learning structure

III. ADAPTIVE NEURO FUZZY INFERENCE SYSTEM

In order to use neural networks for fuzzy inference, it is necessary to study the structure of this system along with its training algorithm. Adaptive Neuro-Fuzzy Systems (ANFIS) were first introduced in [9], with further models proposed in [10], [11]. These structures proved to be useful for control purposes and many other different applications. The simple diagram of Figure 4 shows the structure of ANFIS, where f is the output of the net, and x_1 and x_2 are the inputs to this net. The weights of layer 3 are represented by (w_1, w_2) , and the weights of layer 4 are represented by $(w_1 f, w_2 f)$. The type of algorithm that ANFIS uses to identify fuzzy parameters is either hybrid learning or back-propagation algorithm type. In this work, ANFIS learning and adjusting depend on Hybrid Learning Algorithm (HLA). In the forward pass the algorithm uses least-squares method to identify the consequent parameters on layer 4. In the backward pass the errors are propagated backward and the premise parameters are updated by gradient descent. Table I summarizes the actions in each pass.

Accordingly, the hybrid approach converges much faster since it reduces the search space dimensions of the original pure backpropagation method [9].

Table I
HYBRID LEARNING ALGORITHM PROCEDURE FOR ANFIS [12]

Action\Pass	Forward pass	Backward Pass
Premise parameters	Fixed	Gradient descent
Consequent parameters	Least-square estimator	Fixed
Signals	Node outputs	Error signals

IV. FUZZY SUBTRACTIVE CLUSTERING METHOD

Fuzzy Subtractive Clustering Method (FSCM) is a method, that extracts rules from supplied input-output training data. It is a statistical classification technique, which is used for discovering whether the individuals of a population fall into different groups by making quantitative comparison of multiple characteristics. FSCM was firstly proposed by [13]. The computation simply depends on the number of data points, and is independent from the dimension of the problem. Rules extraction is made based on:

$$p_i = \sum_{j=1}^n e^{-\alpha \|x_i - x_j\|^2} \quad (1)$$

where

$$\alpha = \frac{4}{r_a^2} \quad (2)$$

and r_a is a positive constant that represents the radius of data neighbourhood. In (1), p_i is the density of each examined point. X_i is the point, that is examined at time of measuring density p_i of this point, and x_i is other data within the neighbourhood. After finding the density for each data point, the highest density point will be selected to be the first cluster centre. The other cluster centres will be chosen according to the following formulas:

$$p_i = p_i - p_{c1} e^{-\beta \|x_i - x_c\|^2} \quad (3)$$

$$\beta = \frac{4}{r_b^2} \quad (4)$$

$$r_b = 1.5r_a \quad (5)$$

where p_{c1} is the next density point to be examined, and x_{c1} is the next data point to be examined. Data point with highest remaining potential is selected as the second cluster centre. The process is repeated until the amount of the remaining potential data becomes less than a fractional value of that in the first cluster potential. For this work, the value is selected to be 0.15, relating this work to [14][15].

V. MODELLING METHODOLOGY

The system operation historical data constitute the input to the FSCM based ANFIS. This data stream consisting of the half-hourly readings of the power consumption is structured by dividing it into 12 separate monthly sets used to derive separate monthly models, thus simplifying the models and reducing the required computational resources. Figure 5 presents the structure of the annual energy consumption demand model.

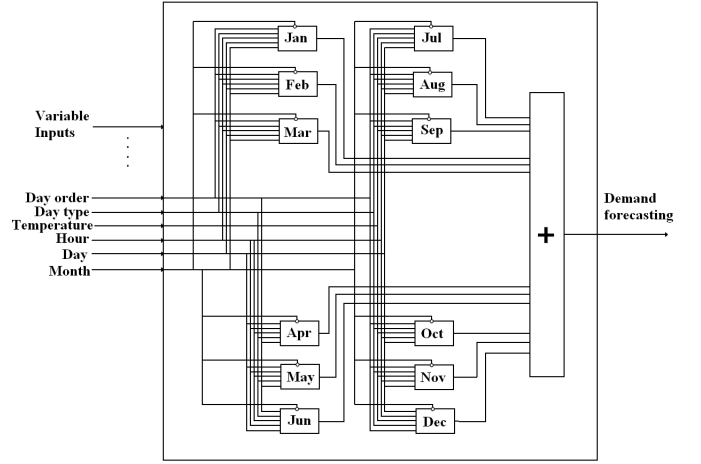


Figure 5. Demand forecasting model of every half hour load in the year

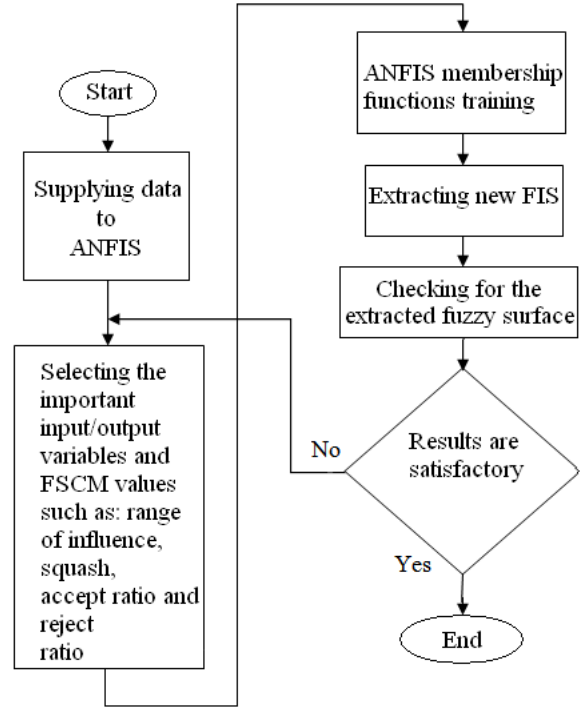


Figure 6. Fuzzy Subtractive Clustering Method modelling procedure

Each of the monthly models has been developed by supplying order of the day, type of the day, temperature, hour, date, and consumption data to ANFIS framework. Random values are utilised to initiate clustering of the supplied data using FSCM. In Figure 6, clustering and rule extraction procedure is presented. The choices of the number of input/output variables and FSCM parameters, such as Range Of Influence (ROI), squash, accept ratio, and reject ratio values, are made based on trial and error. Tuning is applied to improve the modelling performance.

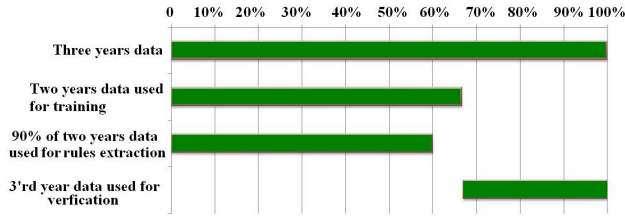


Figure 7. Data utilisation in developing demand forecasting model

To increase the range of learning, the historical data are organised into three groups. The first group is used to develop ANFIS rules, and it consists of 90% of the two years of the historical data. The second group, used to train the developed ANFIS system, contains full two years of the historical data. Finally, the third group, used to verify the validity of the developed model, consists of the third year of historical operation data. Figure 7 illustrates the utilisation of the original data in the modelling process.

A sufficient number of training epochs is applied at each modelling step to ensure having heavy training process. The developed fuzzy model surfaces are monitored to ensure having sufficient coverage for the prediction range. When the prediction is achieved with an acceptable error ratio, then the modelling procedure is complete. Otherwise, if the resultant surface has incorrect shape, or not covering all the prediction ranges, new values for the range of influence and number of epochs are applied. Figure 6 depicts the modelling procedure decisions. Figure 8 presents the surfaces of the developed fuzzy systems for the three, four and five input variables.

VI. RESULTS

The obtained results demonstrate the dependence of the forecasting accuracy on the number of inputs. Figure 9 illustrates different forecasting accuracy for the three-, four- and five-input systems. In order to evaluate the degree of forecasting enhancement, the Mean Absolute Error (MAE) is used.

$$MAE = \frac{1}{n} \sum_{t=1}^n |y_t - \hat{y}_t| \quad (6)$$

Where n is the number of entries, t is the time at each entry, y_t is the actual demand and \hat{y}_t is the forecasted value. Table II presents MAE results with modelling complexity for all investigated cases. Modelling complexity is shown in terms of used number of membership functions (MMF_{cn}) and the value of (ROI). It is clear that the fourth input significantly reduced the forecasting error, while it is shown that in case of five inputs system, the range of forecasting accuracy improvement may change from negative 30% to positive 50%; depending on the load change patterns in each month. However, the complexity of the models has been raised to double or triple in most cases. It simply tells that this input does not have

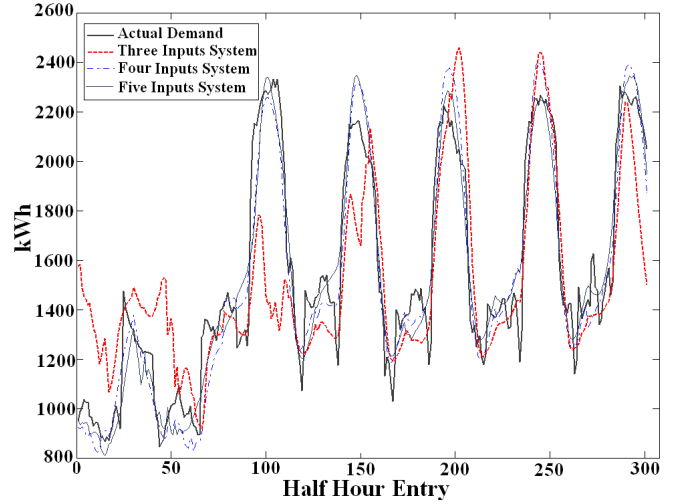


Figure 9. Forecasting results comparison for demand in ECU from 17th till 21st of January, 2009

big influence on the load changes in ECU. Thus considering it as a fifth input to the models will not have significant prediction improvement, or it may even work negatively. Figure 9 shows the forecasting results for the three-, four- and five-input systems. For safety consideration, a spot on the period from 17th till 21st of January 2009, which shows the worst forecasting accuracy in that month, is shown.

Studying system operation conditions e.g. the operation times, the number of people and the amount of consumed energy during the day or night may help in developing supportive variables to improve the forecasting accuracy, as long as the significance of the input is assessed prior to its use in the model development.

VII. CONCLUSIONS

In this paper, load demand forecasting method was developed based on realistic data using FSCM based ANFIS. Selection of the important factors (inputs) in modelling is crucial in order to achieve best forecasting outcomes. 12-month demand forecasting models were developed based on historical operation data of ECU power consumption. Selection of significantly effecting factors (inputs) has been investigated. It has been found that for the specified power system, the four-input ANFIS could achieve the best forecasting accuracy. The results illustrate the forecasting accuracy across the twelve-month span. However, adding an improper input to the model structure may affect modelling complexity and error reduction ratios.

REFERENCES

- [1] K. Y. Tan and Lun-nong, "Application of adaptive neuro-fuzzy inference system based on data field clustering in load forecasting," pp. V9-57-V9-60, 2010.
- [2] M. Y. M.-R. M.-R. A. T. Zohreh Souzanchi-K, Hadi Fanaee-T, "A multi adaptive neuro fuzzy inference system for short term load forecasting by using previous day features," 2010.

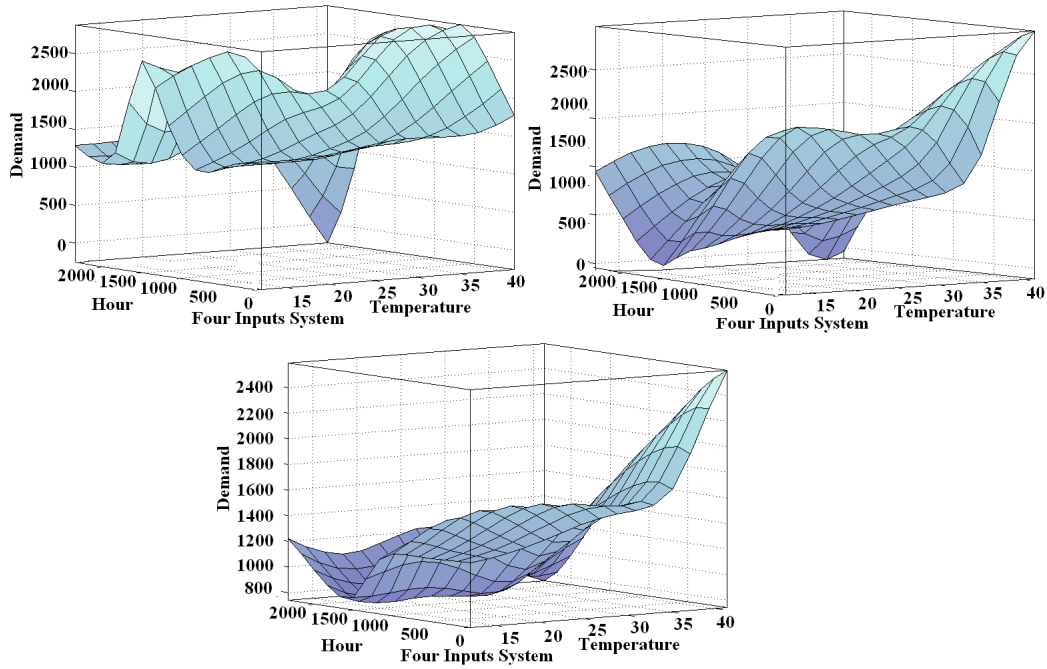


Figure 8. Fuzzy surface for the developed fuzzy models of the three-, four- and five-input system

Table II
THREE-, FOUR- AND FIVE-INPUT SYSTEMS FORECASTING ACCURACY

Month\Inputs	Three inputs			Four inputs			Five inputs		
	MAE	MMFcns	ROI	MAE	MMFcns	ROI	MAE	MMFcns	ROI
January	75360	63	0.35	29030	76	0.43	14540	150	0.5
February	146600	69	0.38	23580	72	0.4	15920	150	0.5
March	164800	33	0.45	42060	56	0.5	53940	145	0.5
April	99800	78	0.33	45300	160	0.33	24480	140	0.5
May	70550	39	0.44	27880	68	0.44	35950	145	0.5
June	68940	45	0.48	21660	100	0.4	21990	320	0.4
July	61000	36	0.5	19100	80	0.45	29140	145	0.5
August	96980	36	0.5	25030	76	0.48	31070	145	0.5
September	148600	54	0.45	55780	76	0.43	43872	120	0.55
October	86490	24	0.5	29260	44	0.5	33820	125	0.5
November	95110	33	0.48	27050	64	0.5	41120	135	0.5
December	73850	45	0.41	32920	60	0.41	22680	182	0.45

- [3] C. L. A. K. A. R. Koushki, M. Nosrati Maraloo, "Application of neuro-fuzzy models in short term electricity load forecast," pp. 41–46, 2009 2009.
- [4] C. Jaipradidtham, "Next day load demand forecasting of future in electrical power generation on distribution networks using adaptive neuro-fuzzy inference," pp. 64–67, NOVEMBER 28-29, 2006 2006.
- [5] F. Pasila, "Multivariate inputs for electrical load forecasting on hybrid neuro-fuzzy and fuzzy c-means forecaster," in *IEEE International Conference on FUZZ SYSTEMS (IEEE World Congress on Computational Intelligence)*. London, UK: IEEE, 2008.
- [6] M. B. A. M. M. R. A.-F. K. S. Mohammadi, H. Keivani, "Demand forecasting using time series modelling and anfis estimator," 2006.
- [7] M. A. A. Arash Ghanbari, S. Farid Ghaderi, "A clustering based genetic fuzzy expert system for electrical energy demand prediction," 2010.
- [8] H. E. Alireza Khotanzad, Enwang Zhou, "A neuro-fuzzy approach to short-term load forecasting in a price-sensitive environment," *IEEE TRANSACTIONS ON POWER SYSTEMS*, vol. 17, no. 4, p. 10, 2002.
- [9] J. S. R. Jang, "Anfis: adaptive-network-based fuzzy inference system," *Systems, Man and Cybernetics, IEEE Transactions on*, vol. 23, no. 3, pp. 665–685, 1993.
- [10] C. S. G. L. Chin-Teng Lin, *Neural Fuzzy Systems: A Neuro-Fuzzy Synergism to Intelligent Systems*. New Jersey: Prentice-Hall, 1996.
- [11] L. X. Wang and J. M. Mendel, "Back-propagation fuzzy system as nonlinear dynamic system identifiers," in *Fuzzy Systems, 1992., IEEE International Conference on*, pp. 1409–1418.
- [12] E. M. Jyh-Shing Roger Jang, Chuen-Tsai Sun, *Neuro-Fuzzy and Soft Computing: A Computational Approach to Learning and Machine Intelligence*, ser. MATLAB CURRICULUM SERIES. Upper Saddle River, New Jersey: Prentice Hall, 1997.
- [13] S. L. Chiu, "Fuzzy model identification based on cluster estimation," *Journal of Intelligent and Fuzzy Systems*, vol. 2, pp. 267–278, 1994.
- [14] V. K. Seema Chopra, R. Mitra, "Neural network tuned fuzzy controller for mimo system," *International Journal of Electrical and Computer Engineering*, 2007.
- [15] V. K. Seema Chopra, R. Mitra, "Analysis of fuzzy pi and pd type controllers using subtractive clustering," *International Journal of Computational Cognition*, vol. 4, no. 2, pp. 30–34, 2006.



T. S. Mahmoud (M'2011) graduated with a Bachelor of Control Systems Engineering from University of Technology, Iraq, in 2004. He worked in the field of power systems installation in Iraq after his graduation. He obtained his Master in control and automation engineering from Universiti Putra Malaysia, Malaysia, in 2007. He was a lecturer in UCSI University in Kuala Lumpur after that. He is currently pursuing his PhD in the field of energy management systems in Edith Cowan University in Western Australia. His research interests include

control systems design, smart energy systems, SmartGrids, energy management systems and Artificial Intelligence.



D. Habibi (M'95, SM'99) graduated with a Bachelor of Engineering (Electrical) with First Class Honours from the University of Tasmania in 1989 and a PhD from the same University in 1994. His employment history includes Telstra Research Laboratories, Flinders University, Intelligent Pixels Inc., and Edith Cowan University, where he is currently a Professor and the Head of the School of Engineering. His research interests include engineering design for sustainable development, reliability and quality of service in communication systems and networks,

smart energy systems, and environmental monitoring technologies. He is a Fellow of Engineers Australia, Electrical College Board member of Engineers Australia, ITEE College Board member of Engineers Australia, Editor-in-Chief of the Australian Journal of Electrical and Electronic Engineering, and Deputy President of the Australian Council of Engineering Deans.



O. Bass (M'06, SM'10) was born in Oradea in Romania, on September 30, 1971. He graduated from the "Politehnica" University of Timisoara, Romania, in 1995 and received his PhD from the same University in 2001. His employment history includes research positions at the Budapest University of Technology and Economics, Hong Kong Polytechnic University, Hull University UK, and Utsunomiya University, Japan. He was a lecturer at James Cook University, Queensland, Australia, from 2006 to 2009 and is currently a Senior Lecturer at Edith

Cowan University, Western Australia. His fields of interest include smart grid technologies, renewable energy resources, power electronics, nonlinear dynamics and e-learning. He has co-authored 70 professional publications.



S. Lachowicz (M'97, SM'04) was born in Lodz, Poland, on February 22, 1959. He received his MSEE and PhD in Electronic Engineering from the Technical University of Lodz, Poland, in 1981 and 1986 respectively. From 1986 until 1992 he was an assistant professor at the same university. In 1993 he joined School of Engineering at Edith Cowan University, Perth, Western Australia where he is a senior lecturer. He authored and co-authored about 80 scientific publications. His research interests include, smart energy systems, renewable energy sources,

power electronics, and digital systems.